

**Blessed Sacrament's
 Extended Day Program
 (EDP)**



**Director :
 Ms. Marissa Williams**

Ms. Marissa has a Bachelors of Science in Public Health with an emphasis in Health Education and Promotion from GSU. This is her third year working at BSS and truly loves the children, parents, and all of the faculty. In her free time she loves being with family and friends.



**Lead Counselor &
 Morning Counselor :
 Ms. Ann Langley**

Ms. Ann holds a Masters Degree in Criminal Justice. She is a mother of two and her passion is helping others and working with children. Ms. Ann's interests are table games, reading, and amusement parks!



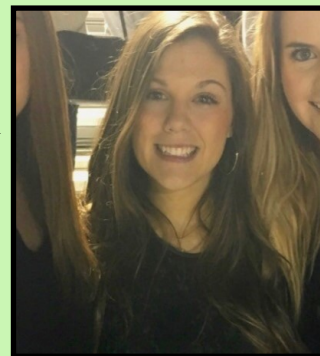
**Lead Counselor:
 Ms. Abby Baumann**

Ms. Abby attends GSU studying Communication Sciences and Disorders for Speech- Language Pathology. Her Hobbies include working with children, art, and being outdoors. She can't wait for the school year to begin!



**Assistant Counselor:
 Ms. Kayla Griffin**

Ms. Kayla is a junior at Savannah Christian School. This is her second year working for the EDP Program and she loves working with the children and her fellow staff. She is very excited for the school year and ready to meet everyone!



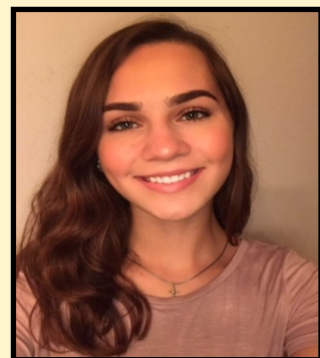
**Lead Counselor & Morn-
 ing Counselor:
 Ms. DeAundrea Jackson**

Ms. De' attends SVU. She is mother of a one year old son. Her hobbies include reading, writing, and working with children. She is excited to build relationships with all the students and parents at BSS!



**Assistant Counselor:
 Ms. Hailey Harwell**

Ms. Hailey is a junior in the Veterinarian Program at Islands High School where she also plays soccer. She has three younger siblings and is from Savannah. She is anxious to begin working for Extended Day and excited to meet everyone.



Meet the Staff

Reminders!

- Please contact mwilliams@bss-savannah.org for any questions regarding EDP

About EDP



Drop - off and pick – up!

- For morning drop-off (6:30am - 7:30am) you may enter through the doors located by our school playground on 44th street.
- Morning EDP will be located in the school cafeteria
- PreK—1st must have someone walk inside to sign in with a counselor, 2nd—8th are able to sign themselves in.
- For pick-up (2:40pm - 6:00pm) please enter through the doors located by the school playground on 44th street.
- Please look on the EDP White Board for pick-up time and locations as this can change daily.
- EDP's White Board is located as soon as you walk through the doors by the school playground on 44th street.

What to Bring to EDP

- Chef Mac prepares a variety of **peanut-sensitive** snacks daily (we usually have three options)
- Feel free to **pack a snack** of your own liking!
- When we go outside it sometimes can get **buggy**, if you would like to **bring bug spray** we can keep it in our EDP office.
- Bringing a **change of clothes** to EDP is **optional**
- Tennis Shoes** are required on the gym floor, **we recommend bringing tennis shoes and a change of clothes every conference and half day!**



EDP SCHEDULE!

- Please refer to the **EDP White Board daily located at the door on 44th street:)**
- EDP's schedule may change due to certain events that come up

PreK& K Monday—Thursday	
2:40—3:30	Cafeteria - snack /stations
3:30—4:15	School Playground Rain: Room #2
4:15—5:00	Cafeteria
5:00—5:30	Room #1
5:30—6:00	School Playground Rain: Room #1 or EDP office

1st - 3rd Grade Monday—Thursday	
2:40—3:15	Cafeteria - snack
3:15—4:15	Homework in Lecture Hall OR Cafeteria when finished
4:15—5:00	Daffin Park Rain: Cafeteria
5:00—5:30	Room #1
5:30—6:00	School Playground Rain: Room #1 or EDP Office

4th—8th Grade Monday—Thursday	
2:40—3:15	Cafeteria -snack
3:15—4:15	Homework in Lecture Hall OR Cafeteria when finished
4:15—5:00	Daffin Park Rain: Room #0
5:00—5:30	Room #1
5:30—6:00	School Playground Rain: Room #1 or EDP Office

1 –8 Fun Friday	
2:30—3:15	Cafeteria -snack
3:15—4:00	Daffin Park Rain: Cafeteria
4:00—5:00	Cafeteria
5:00—5:30	Room #1
5:30—6:00	School Playground Rain: Room #1 or EDP Office

PreK & K Fun Friday	
2:30—3:15	Cafeteria -snack
3:15—4:00	School Playground Rain: Room #2
4:00—5:00	Cafeteria
5:00—5:30	Room #1
5:30—6:00	School Playground Rain: Room #1 or EDP Office

What's New?



Check– Out Procedures

1. Walk to EDP Counselor who is over your child's group
 2. The Counselor will ask for your first and last name
 3. Please give the Counselor time as she/he is checking the authorized list for pick-up
 4. Once the Counselor has checked you are able to pick-up she/he will print your name on our attendance sheets
 5. The Counselor will then ask for you to sign beside the printed name
 6. The Counselor will then write the time your child was checked out of EDP.
- Please be patient with the staff as we get used to our new check-out system
 - If person picking up is not on the authorized list please send a written note or email to EDP Director.

REMINDER

- Please prepare for your child to be at Daffin Park.
- EDP is not allowed to keep any child inside unless a plan is discussed with the Director.
- EDP will take your child to practices and events located at the BSS only if the Director has a written email or note with a plan provided by the guardian.

Book-Bag & Lost and Found System

- You can locate your child's book-bag in the hall near the Cafeteria in a color coded bin with each bin showing a labeled grade.
- We ask that you write a name on everything as these bins are shared with others
- If any item is left in the bin at the end of the day the counselors place the left items on the white lost and found shelf located by the school's main office

Facilities Used

- **Lower School Classrooms**
Rm #0 (Ms. George) , Rm #1 (Ms. Latimer), Rm #2 (Ms. Marlowe)
Rm #3 (Ms. Swann), Rm #4 (Ms.Swick)
- **The Lecture Hall**
The Lecture Hall is used for homework and is located on the second floor across from the media center
- **The Cafeteria**
- **The Gym**
- **Daffin Park**
- **The School Playground**